

FRANKLIN COUNTY COURTHOUSE

SHORING • UNDERPINNING • SHOTCRETE • HELICAL PILES • TIEBACKS • MICROPILES • GROUTED JACKED PILES

PROJECT DESCRIPTION:

Project Date: July 2011

Project Name: Franklin County Courthouse

Project Location: Frankfort, KY

Engineer of Record: Magnum-Geo Solutions
Poage Engineers

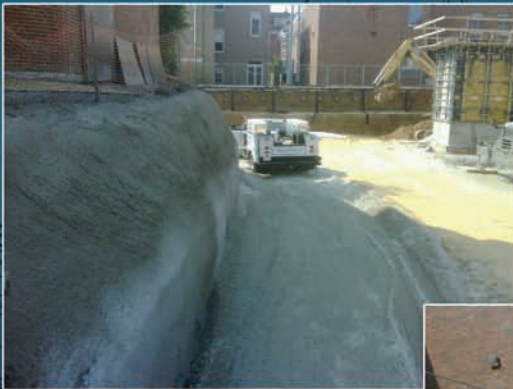
General Contractor: Rising Sun Developing Co.

Construction Manager: Codell Construction

Owner: Commonwealth of Kentucky

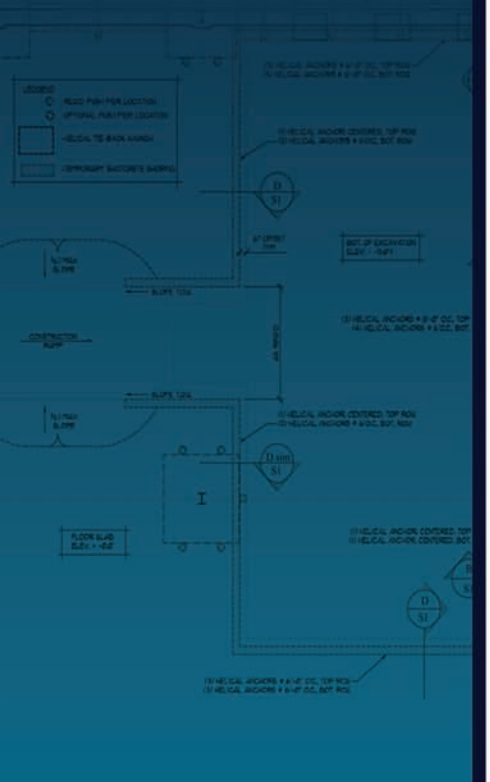
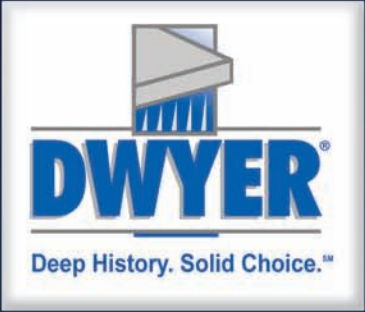
Scope: Shoring, Underpinning, Shotcrete using Helical Piles, Helical Tiebacks, Micropiles & Grouted Jacked Piles.

- 82 Helical Tiebacks
- 60 Soil Nails
- 25 Grouted Jacked Piles
- 4300 sq.ft of Shotcrete Shoring



Deep History. Solid Choice.™

Toll Free: 877.399.3726 www.dwyercompanies.com



SHORING & UNDERPINNING PLAN

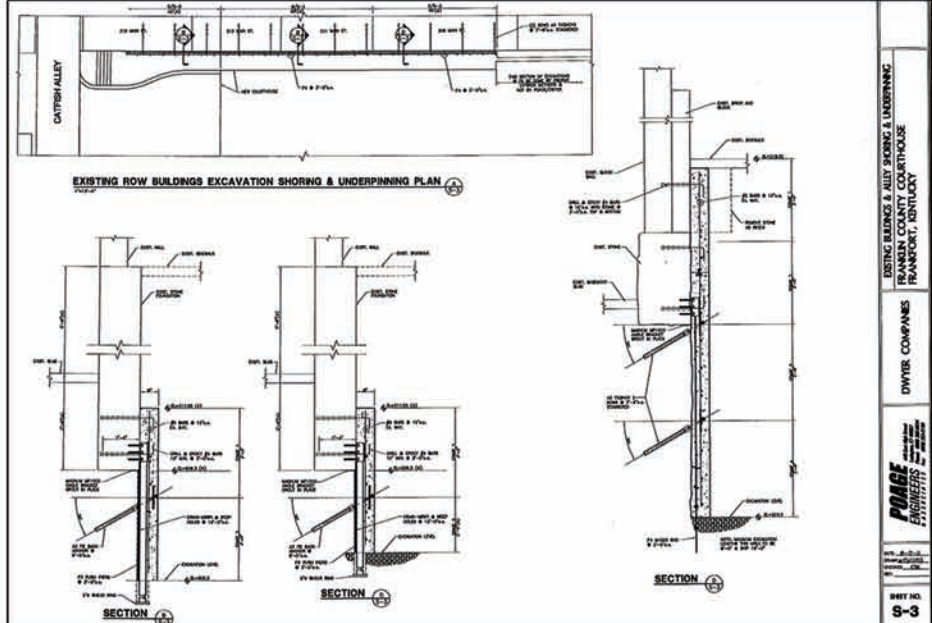
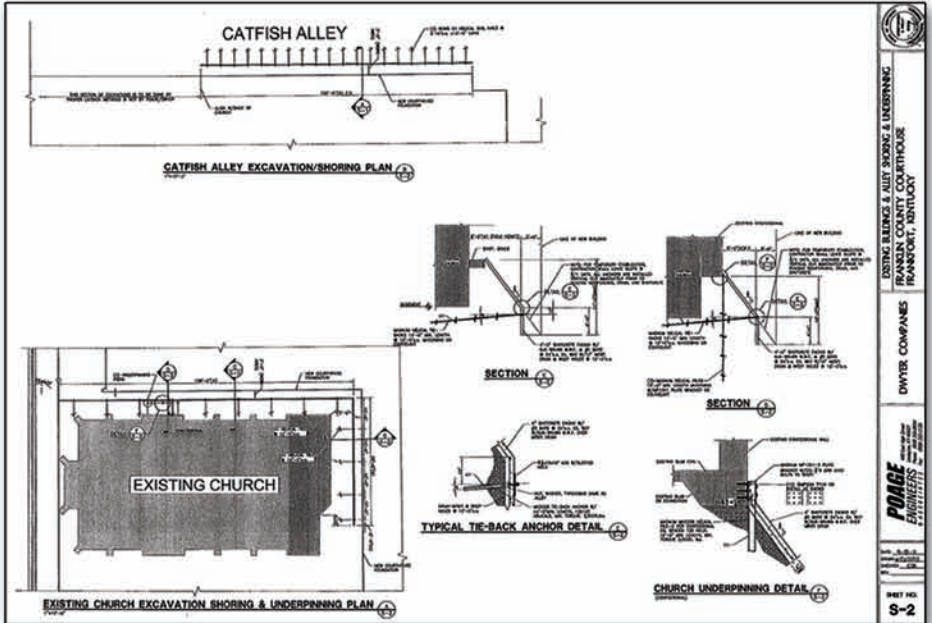
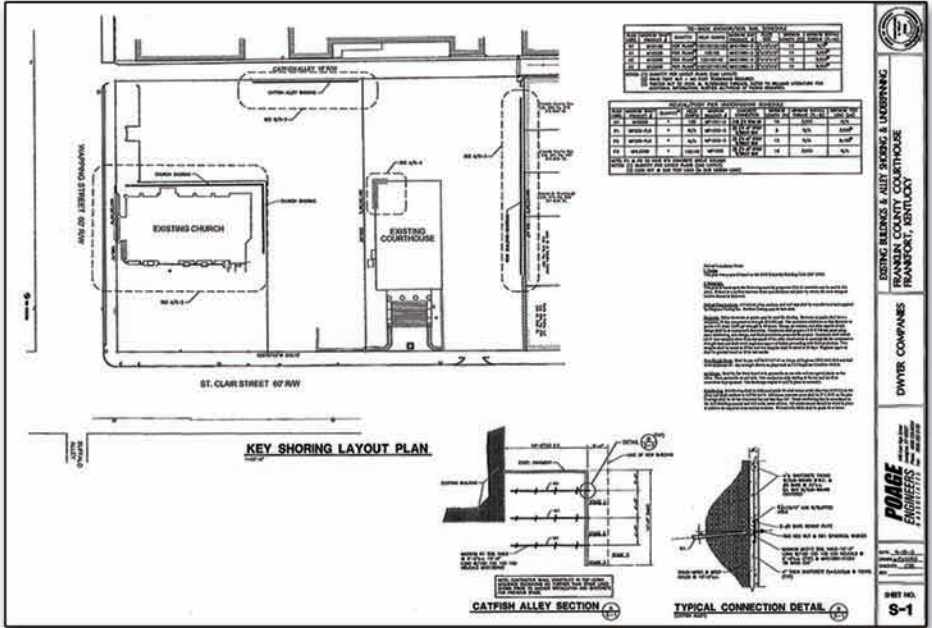
SCALE 1/4" = 1'-0"

| SYMBOL | QUANTITY | DESIGN CAPACITY | MIN. LENGTH | PIER CAP | SHAFT DIA. |
|--------|----------|-----------------|-------------|------------------------------------|-----------------------------------------------|
| 1 | 2 | 10 KIPS | 2'-0" | FRONT TIE-BACK CAP AT LEVEL 10'-0" | MIN. 2.0" DIA. BY HELIX SHIRT (STANDARD DUTY) |
| 2 | 5 | 10 KIPS | 2'-0" | FRONT TIE-BACK CAP AT LEVEL 10'-0" | MIN. 2.0" DIA. BY HELIX SHIRT (STANDARD DUTY) |

| SYMBOL | QUANTITY | DESIGN CAPACITY | MIN. LENGTH | PIER CAP CONNECTION | NOTES |
|--------|----------|-----------------|----------------------------------|---------------------|-----------------------------------------------|
| 3 | 14 | 20 KIPS | AS NOTED TO TEST DESIGN CAPACITY | PLATE BRACKET | MIN. 2.0" DIA. BY HELIX SHIRT (STANDARD DUTY) |
| 4 | 5 | 20 KIPS | AS NOTED TO TEST DESIGN CAPACITY | PLATE BRACKET | MIN. 2.0" DIA. BY HELIX SHIRT (STANDARD DUTY) |

CONSTRUCTION SEQUENCE

1. EXCAVATE TO BOTTOM OF EXISTING FOUNDATION. INSTALL ALL PUSH PIERS TO BE INSTALLED TO FULL DESIGN CAPACITY. THE BRACKET SHALL BE INSTALLED TO FULL DESIGN CAPACITY. THE BRACKET SHALL BE INSTALLED TO FULL DESIGN CAPACITY. THE BRACKET SHALL BE INSTALLED TO FULL DESIGN CAPACITY.



EXISTING BUILDINGS & ADJUT WORKING & UNDERPINNING
FRANKLIN COUNTY COURTHOUSE
FRANKFORT, KENTUCKY

DWYER COMPANIES
Dwyer Companies, Inc.
1000 W. Main Street
Frankfort, KY 40601
502-223-1111

POAGE ENGINEERS
POAGE ENGINEERS, INC.
1000 W. Main Street
Frankfort, KY 40601
502-223-1111

SHEET NO. S-1

EXISTING BUILDINGS & ADJUT WORKING & UNDERPINNING
FRANKLIN COUNTY COURTHOUSE
FRANKFORT, KENTUCKY

DWYER COMPANIES
Dwyer Companies, Inc.
1000 W. Main Street
Frankfort, KY 40601
502-223-1111

POAGE ENGINEERS
POAGE ENGINEERS, INC.
1000 W. Main Street
Frankfort, KY 40601
502-223-1111

SHEET NO. S-2

EXISTING BUILDINGS & ADJUT WORKING & UNDERPINNING
FRANKLIN COUNTY COURTHOUSE
FRANKFORT, KENTUCKY

DWYER COMPANIES
Dwyer Companies, Inc.
1000 W. Main Street
Frankfort, KY 40601
502-223-1111

POAGE ENGINEERS
POAGE ENGINEERS, INC.
1000 W. Main Street
Frankfort, KY 40601
502-223-1111

SHEET NO. S-3

