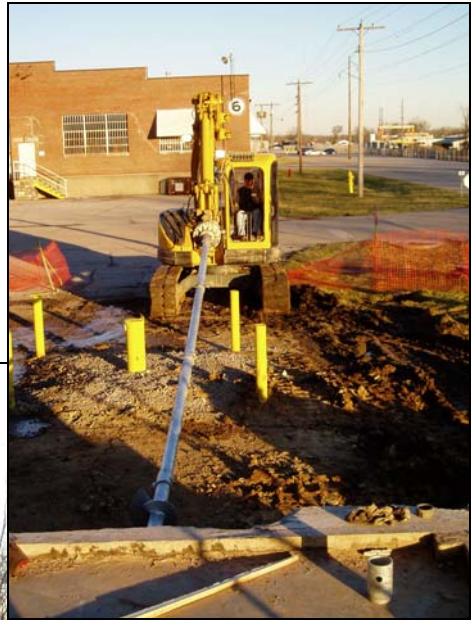


Dwyer Case History



Project Name: Bluegrass Station

General Contractor: Baesler Construction

Project Type: Foundation Repair, Tie Backs, Underpinning, Pressure Grouting, Slabjacking

Location: Lexington, KY

Project Description: Emergency Wall Repair

An exterior wall was severely bowed, the existing footings had settled, and the foundation was rotating and leaning outward. Dwyer installed 29 Helix Tie Backs, 8 Push Piers, Pressure Grouted 8' below the footings to fill voids, and then Slabjacked the interior floor slab 2". Dwyer successfully completed the job on March 4, 2005.

Foundation Repair, Helix Tie Backs, Underpinning, Pressure Grouting, Slabjacking

